



Flygt 2630.281

Table of Contents

1 Introduction.....	2
1.1 Specially approved products.....	2
2 Product Description.....	3
2.1 Products included.....	3
2.2 The data plate.....	3
2.3 Product denomination.....	3
3 Spare Parts.....	5
3.1 Exploded view.....	5
3.2 List of parts.....	6

1 Introduction

Purpose of this manual

The purpose of this manual is to provide necessary information on spare parts and accessories order.

Disclaimer

Always use genuine Flygt parts. The use of other spare parts or accessories can invalidate any claims for warranty or compensation. Xylem does not take any responsibility for damages that are caused by the use of non-original parts. For more information, contact your local sales and service representative.

Data for ordering spare parts

The following information is needed for spare part orders:

- Serial number of the product
- Part number
- Quantity of bulk material, see * in tables

1.1 Specially approved products

Qualification of personnel

Only Xylem or Xylem-authorized service personnel may undertake repair work on Ex-approved products.

Dimensional accuracy inspection

Spare parts marked with (Ex) after the part number are subject to dimensional accuracy inspection.

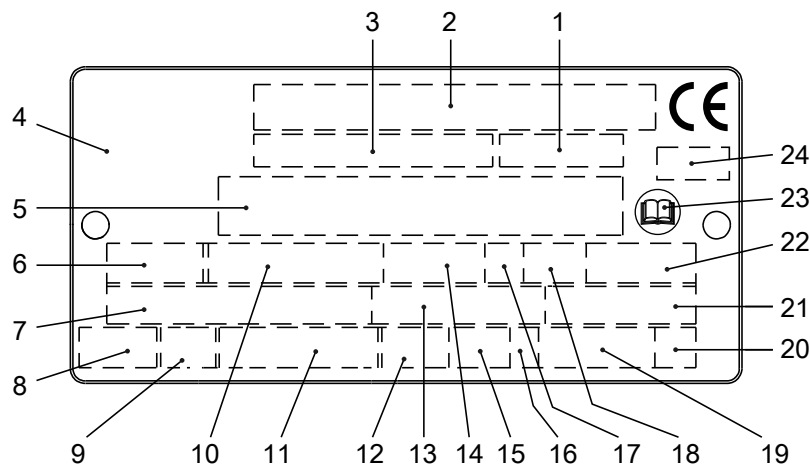
2 Product Description

2.1 Products included

Pump model	Standard	EX	MSHA	Drainage	Sludge
2630.281	X				X

2.2 The data plate

The data plate is a metal label that is located on the main body of the products. The data plate lists key product specifications. Specially approved products also have an approval plate.



1. Curve code or Propeller code
2. Serial number
3. Product number
4. Country of origin
5. Additional information
6. Phase; type of current; frequency
7. Rated voltage
8. Thermal protection
9. Thermal class
10. Rated shaft power
11. International standard
12. Degree of protection
13. Rated current
14. Rated speed
15. Maximum submergence
16. Direction of rotation: L=left, R=right
17. Duty class
18. Duty factor
19. Product weight
20. Locked rotor code letter
21. Power factor
22. Maximum ambient temperature
23. Read installation manual
24. Notified body, only for EN-approved Ex products

Figure 1: The data plate

2.3 Product denomination

Reading instruction

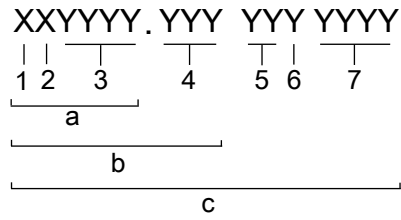
In this section, code characters are illustrated accordingly:

X = letter

Y = digit

The different types of codes are marked up with a, b and c. Code parameters are marked up with numbers.

Codes and parameters

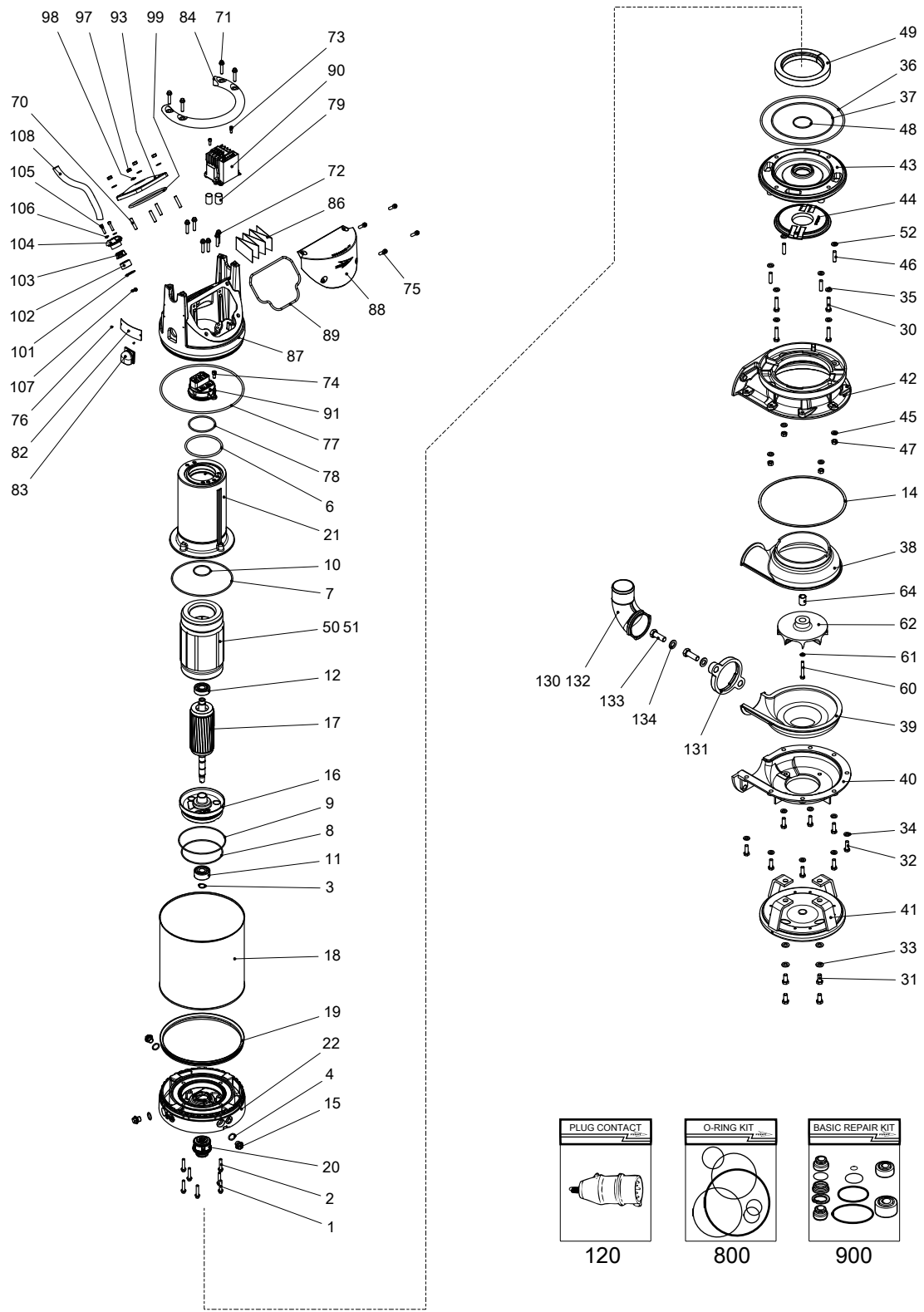


WS006265B

Type of Callout	Number	Indication
Type of code	a	Sales denomination
	b	Product code
	c	Serial number
Parameter	1	Hydraulic end
	2	Type of installation
	3	Sales code
	4	Version
	5	Production year
	6	Production cycle
	7	Running number

3 Spare Parts

3.1 Exploded view



20144B_expl_view_2630_2640_281

3.2 List of parts

Pos. No	Part. No	Denomination	Qty/Version
			281
1	81 64 92	Hexagon flange screw M8X40-A2-70	4
2	81 64 92	Hexagon flange screw M8X40-A2-70	3
3	82 58 92	Retaining ring SGA 20	1
4	82 72 95	O-ring 19.2X3 FPM	3
6	82 74 15	O-ring 114.3X5.7 NBR	1
7	82 78 29	O-ring 192.0X4.0 NBR	1
8	82 74 79	O-ring 129.5X3 NBR	1
9	82 74 82	O-ring 144.5X3.0 NBR	1
10	82 79 28	O-ring 52.5X3.0 FPM	1
11	83 30 14	Ball bearing 20X52X22.2 MM	1
12	83 33 13	Ball bearing 20X52X15 MM	1
13	90 17 52	Oil ISO VG 32	*
14	283 94 00	Gasket	1
15	428 22 17	Inspection screw	3
16	693 39 00	Bearing housing	1
17	720 08 01	Shaft unit	1
18	693 41 00	Cooling jacket	1
19	708 95 00	Seal ring	1
20	769 94 30	Mechanical seal	1
	20,1 82 68 45	Retaining ring	1
21	774 12 00	Stator housing	1
22	774 89 10	Adapter	1
30	81 41 35	Hexagon head screw M10X45-A2-70	4
31	81 41 54	Hexagon head screw M12X25-A2-70	4
32	81 41 32	Hexagon head screw M10X30-A2-70	8
33	82 35 20	Plain washer 12-A2-170	4
34	82 35 76	Plain washer 10-A4-170HV	8
35	82 35 76	Plain washer 10-A4-170HV	4
36	82 74 99	O-ring 259.3X5.7 NBR	1
37	82 71 34	O-ring 192X4.0 FPM	1
38	515 79 00	Wear protection	1
39	515 80 00	Wear protection	1
40	515 85 00	Pump housing	1
41	710 42 00	Stand complete	1
42	718 64 01	Pump housing upper	1
43	718 74 00	Seal housing cov.coa	1
44	774 39 00	Guide plate	1
45	82 35 76	Plain washer 10-A4-170HV	4
46	80 95 06	Stud M10X28-A2-70	4
47	82 23 33	Hexagon nut M10-A4-70	4
48	82 71 67	O-ring 57.5X3.0 FPM	1
49	83 94 68	Pressure equalizer L=510 MM	1

Pos. No	Part. No	Denomination	Qty/Version
			281
50	719 40 07	Stator 15-14-4a 6-leads 3-phase 60 Hz 4-poles 200V-208V D	1
50	719 40 05	Stator 15-14-4a 6-leads 3-phase 50 Hz 4-poles 380V-400V Y 6-leads 3-phase 50 Hz 4-poles 220V-240V D	1
50	719 40 06	Stator 15-14-4a 6-leads 3-phase 60 Hz 4-poles 220V-240V D	1
50	719 40 04	Stator 15-14-4a 9-leads 3-phase 60 Hz 4-poles 440V-480V YSER 9-leads 3-phase 60 Hz 4-poles 220V-240V Y//	1
50	719 40 01	Stator 15-14-4a 6-leads 3-phase 50 Hz 4-poles 380V-400V D 6-leads 3-phase 60 Hz 4-poles 440V-480V D 6-leads 3-phase 50 Hz 4-poles 660V-690V Y	1
50	719 40 03	Stator 15-14-4a 6-leads 3-phase 60 Hz 4-poles 380V-400V D	1
50	719 40 11	Stator 15-14-4a 12-leads 3-phase 60 Hz 4-poles 440V-460V DSER 12-leads 3-phase 60 Hz 4-poles 380V-400V Y//	1
50	719 40 02	Stator 15-14-4a 6-leads 3-phase 50 Hz 4-poles 415V-440V D	1
50	719 40 08	Stator 15-14-4a 6-leads 3-phase 50 Hz 4-poles 500V D 6-leads 3-phase 60 Hz 4-poles 575V-600V D	1
50	719 40 09	Stator 15-14-4a 6-leads 3-phase 50 Hz 4-poles 525V-550V D 6-leads 3-phase 50 Hz 4-poles 1000V Y	1
51	83 44 24	Closed-end splice 3-6(AWG 12-10) L=18 9-leads 3-phase 60 Hz 4-poles 440V-480V YSER 9-leads 3-phase 60 Hz 4-poles 220V-240V Y// 12-leads 3-phase 60 Hz 4-poles 380V-400V Y//	1
51	83 44 24	Closed-end splice 3-6(AWG 12-10) L=18 9-leads 3-phase 60 Hz 4-poles 440V-480V YSER 9-leads 3-phase 60 Hz 4-poles 220V-240V Y// 12-leads 3-phase 60 Hz 4-poles 380V-400V Y//	2
51	83 44 24	Closed-end splice 3-6(AWG 12-10) L=18 9-leads 3-phase 60 Hz 4-poles 440V-480V YSER 9-leads 3-phase 60 Hz 4-poles 220V-240V Y// 12-leads 3-phase 60 Hz 4-poles 380V-400V Y//	3
52	709 71 00	Gasket	4

Pos. No	Part. No	Denomination	Qty/Version
			281
60	81 56 58	Hexagon head screw M8X60-A4-80	1
61	82 35 74	Plain washer 8-A4-170HV	1
62	706 03 02	Impeller 434 234 D-impeller MT 50Hz 3-phase Maximum temperature 40 DC Material Hard-Iron TM	1
62	706 03 03	Impeller 436 236 D-impeller MT 60Hz 3-phase Maximum temperature 40 DC Material Hard-Iron TM	1
64	779 89 00	Sleeve unit	1
70	83 00 39	Stud	4
71	81 64 92	Hexagon flange screw M8X40-A2-70	4
72	81 64 92	Hexagon flange screw M8X40-A2-70	6
73	82 00 13	Hex.socket hd screw M6X16-A2-70	2
74	82 00 35	Hex.socket hd screw M8X30-A2-70	1
75	82 00 35	Hex.socket hd screw M8X30-A2-70	4
76	82 20 88	Drive screw 4X5-A2/A4	2
77	82 74 99	O-ring 259.3X5.7 NBR	1
78	82 78 15	O-ring 78X4 NBR	1
79	94 05 89	Insulating hose D=18 MM	*
82	630 68 00	Data plate USE 6306801 AS SPARE PART	1
83	706 11 00	Air release valve	1
84	715 05 00	Lifting handle	1
86	773 48 04	Connection plate	1
87	774 05 00	Main cover	1
88	774 06 00	Cover	1
89	774 07 00	Gasket	1
90	774 90 03	Starter unit Contactor unit 60Hz 3-phase 200V - 208V CSA approved Contactor unit 50Hz 3-phase 200V - 208V Not CSA approved	1
	90,1 774 16 00	Holder	1
	90,5 84 02 51	Contactor	1
	90,8 83 02 44	Hex.socket hd screw M4X12-A4-70	2
	90,9 82 26 69	Lock nut	2
	90,13 773 42 03	Cable set	1
	90,15 573 58 03	Electric cable AWG 16;L=70MM CSA	1
90	774 90 01	Starter unit Contactor unit 60Hz 3-phase 220V - 240V CSA approved Contactor unit 50Hz 3-phase 220V - 240V Not CSA approved	1
	90,1 774 16 00	Holder	1
	90,5 84 02 49	Contactor	1
	90,8 83 02 44	Hex.socket hd screw M4X12-A4-70	2
	90,9 82 26 69	Lock nut	2
	90,13 773 42 03	Cable set	1
	90,14 773 42 04	Cable set	1

Pos. No	Part. No	Denomination	Qty/Version
			281
	90,15 573 58 03	Electric cable AWG 16;L=70MM CSA	1
	90,16 773 42 06	Cable set	1
90	774 90 02	Starter unit	1
		Contactor unit 50Hz 3-phase 500V - 500V Not CSA approved	
		Contactor unit 50Hz 3-phase 380V - 400V Not CSA approved	
		Contactor unit 60Hz 3-phase 380V - 400V Not CSA approved	
		Contactor unit 50Hz 3-phase 415V - 440V Not CSA approved	
	90,1 774 16 00	Holder	1
	90,5 84 02 50	Contactor	1
	90,8 83 02 44	Hex.socket hd screw M4X12-A4-70	2
	90,9 82 26 69	Lock nut	2
	90,13 773 42 03	Cable set	1
	90,14 773 42 04	Cable set	1
	90,15 573 58 03	Electric cable AWG 16;L=70MM CSA	1
	90,16 773 42 06	Cable set	1
90	774 90 05	Starter unit	1
		Contactor unit 50Hz 3-phase 525V - 550V Not CSA approved	
		Contactor unit 60Hz 3-phase 575V - 600V CSA approved	
	90,1 774 16 00	Holder	1
	90,4 762 56 00	Motor protector	1
	90,5 82 98 07	Contactor	1
	90,6 83 02 44	Hex.socket hd screw M4X12-A4-70	2
	90,7 82 26 69	Lock nut	2
	90,8 83 02 44	Hex.socket hd screw M4X12-A4-70	2
	90,9 82 26 69	Lock nut	1
	90,12 773 42 02	Cable set	1
	90,14 773 42 04	Cable set	1
	90,16 773 42 06	Cable set	1
	90,17 573 58 62	Single-core cable	1
90	774 90 04	Starter unit	1
		Contactor unit 60Hz 3-phase 440V - 480V CSA approved	
		Contactor unit 60Hz 3-phase 380V - 400V CSA approved	
	90,1 774 16 00	Holder	1
	90,4 762 56 00	Motor protector	1
	90,5 84 02 50	Contactor	1
	90,6 83 02 44	Hex.socket hd screw M4X12-A4-70	2
	90,7 82 26 69	Lock nut	2
	90,8 83 02 44	Hex.socket hd screw M4X12-A4-70	2
	90,9 82 26 69	Lock nut	2
	90,12 773 42 02	Cable set	1
	90,14 773 42 04	Cable set	1
	90,16 773 42 06	Cable set	1

Pos. No	Part. No	Denomination	Qty/Version
			281
90,17	573 58 62	Single-core cable	1
91	777 88 00	Terminal plate unit	1
93	774 20 00	Cover	1
97	82 23 32	Hexagon nut M8-A4-70	4
98	82 35 16	Plain washer 8-A2-170	4
99	82 74 18	O-ring 129.3X5.7 NBR	1
101	82 40 61	Plain washer (10)-22 MM	1
102	84 37 95	Seal sleeve (10)-12 MM	SUBCAB 4G1,5 10,50 - 11,50mm Max 750V 1
102	84 37 97	Seal sleeve (14)-16 MM	SUBCAB 4G1,5+2x1,5 16 - 17mm Max 750V SUBCAB 14AWG/4 14,20 - 15,20mm Max 600V 1
102	84 37 96	Seal sleeve (12)-14 MM	SUBCAB 4G2,5 12,50 - 13,50mm Max 750V Screened 3x2,5 13,50 - 14,90mm Max 1000V 1
102	84 37 98	Seal sleeve (16)-18 MM	SUBCAB 4G2,5+2x1,5 17 - 18mm Max 750V SUBCAB 12AWG/4 17 - 18mm Max 600V 1
102	84 37 99	Seal sleeve (18)-20 MM	SUBCAB S3x2,5+3x2,5/3+S(4x0,5) 18 - 20mm Max 1000V SUBCAB 14AWG/7 18 - 20mm Max 600V 1
102	84 38 00	Seal sleeve (20)-22 MM	SUBCAB 12AWG/7 20 - 22mm Max 600V SUBCAB 10AWG/3-2-1-GC 20,30 - 22,30mm Max 600V 1
102	84 38 01	Seal sleeve (22)-24 MM	SUBCAB 10AWG/3-2-1-GC 20,30 - 22,30mm Max 600V 1
103	678 58 12	Cable clip (10)-12 MM	SUBCAB 4G1,5 10,50 - 11,50mm Max 750V 1
103	678 58 16	Cable clip (14)-16 MM	SUBCAB 4G1,5+2x1,5 16 - 17mm Max 750V SUBCAB 14AWG/4 14,20 - 15,20mm Max 600V 1
103	678 58 14	Cable clip (12)-14 MM	SUBCAB 4G2,5 12,50 - 13,50mm Max 750V Screened 3x2,5 13,50 - 14,90mm Max 1000V 1
103	678 58 18	Cable clip (16)-18 MM	SUBCAB 4G2,5+2x1,5 17 - 18mm Max 750V SUBCAB 12AWG/4 17 - 18mm Max 600V 1
103	678 58 20	Cable clip (18)-20 MM	SUBCAB S3x2,5+3x2,5/3+S(4x0,5) 18 - 20mm Max 1000V SUBCAB 14AWG/7 18 - 20mm Max 600V 1

Pos. No	Part. No	Denomination	Qty/Version
			281
103	678 58 22	Cable clip (20)-22 MM	1
		SUBCAB 12AWG/7 20 - 22mm Max 600V	
		SUBCAB 10AWG/3-2-1-GC 20,30 - 22,30mm Max 600V	
104	686 87 00	Entrance flange	1
105	82 00 17	Hex.socket hd screw M6X25-A2-70	2
106	82 35 73	Plain washer 6-A4-170	2
107	82 00 13	Hex.socket hd screw M6X16-A2-70	1
107	82 00 13	Hex.socket hd screw M6X16-A2-70	2
108	773 47 05	Motor cable unit	1
		SUBCAB 4G1,5 10,50 - 11,50mm L= 20m Max 750V	
108	773 47 10	Motor cable unit	1
		SUBCAB 4G1,5+2x1,5 16 - 17mm L= 20m Max 750V	
108	773 47 06	Motor cable unit	1
		SUBCAB 4G2,5 12,50 - 13,50mm L= 20m Max 750V	
108	773 47 11	Motor cable unit	1
		SUBCAB 4G2,5+2x1,5 17 - 18mm L= 20m Max 750V	
108	773 47 07	Motor cable unit	1
		SUBCAB 14AWG/4 14,20 - 15,20mm L= 16m Max 600V	
108	773 47 15	Motor cable unit	1
		SUBCAB 14AWG/7 18 - 20mm L= 16m Max 600V	
108	773 47 08	Motor cable unit	1
		SUBCAB 12AWG/4 17 - 18mm L= 16m Max 600V	
108	773 47 16	Motor cable unit	1
		SUBCAB 12AWG/7 20 - 22mm L= 16m Max 600V	
108	773 47 17	Motor cable unit	1
		SUBCAB 10AWG/3-2-1-GC 20,30 - 22,30mm L= 16m Max 600V	
108	773 47 21	Motor cable unit	1
		Screened 3x2,5 13,50 - 14,90mm L= 20m Max 1000V	
108	773 47 19	Motor cable unit	1
		SUBCAB S3x2,5+3x2,5/3+S(4x0,5) 18 - 20mm L= 20m Max 1000V	
120	83 49 43	Plug contact	1
		3-phase 50 Hz 380V - 415V Current range: 0 - 16A Plug combined with short cable: No cable Supply connection: CEE 5-PLUG 16A	
120	83 49 44	Plug contact	1
		3-phase 50 Hz 380V - 415V Current range: 0 - 32A Plug combined with short cable: No cable Supply connection: CEE 5-PLUG 32A	
120	84 06 60	Plug contact	1
		3-phase 50 Hz 380V - 415V Current range: 0 - 32A Plug combined with short cable: No cable Supply connection: CEE 4-PLUG 32A	
130	260 53 60	Discharge connection	1
		DN 75 Hose 3" aluminium	
130	266 39 60	Discharge connection	1
		DN 75 Thread: ISO G3A Outer Quick coupling: Storz aluminium	
		DN 75 Thread: ISO G3A Outer aluminium	
130	266 39 61	Discharge connection	1
		DN 75 Thread: NPSM 3-8 Outer aluminium	
130	260 52 60	Discharge connection	1
		DN 100 Hose aluminium	

Pos. No	Part. No	Denomination	Qty/Version
			281
130	279 07 02	Discharge connection	1
		DN 100 Thread: ISO G4A Outer Quick coupling: Storz diam=115 mm aluminium	
		DN 100 Thread: ISO G4A Outer aluminium	
		DN 100 Thread: ISO G4A Outer Quick coupling: Storz aluminium	
130	279 07 03	Discharge connection	1
		DN 100 Thread: NPSM 4-8 Outer aluminium	
130	260 53 50	Discharge connection	1
		DN 75 Hose 3" Grey cast iron	
130	260 53 51	Discharge connection	1
		DN 75 Thread: ISO G3A Outer Grey cast iron	
130	260 53 54	Discharge connection	1
		DN 75 Thread: NPT 3-8 Outer Grey cast iron	
130	260 52 50	Discharge connection	1
		DN 100 Hose Grey cast iron	
130	279 07 04	Discharge connection	1
		DN 100 Thread: ISO G4A Outer Grey cast iron	
130	279 07 08	Discharge connection	1
		DN 100 Thread: NPT 4-8 Outer Grey cast iron	
131	284 91 80	Connection flange	1
132	83 18 46	Coupling part	1
		Discharge Connection DN 75 Thread: ISO G3A Outer Quick coupling: Storz aluminium	
132	83 19 34	Coupling part	1
		Discharge Connection DN 100 Thread: ISO G4A Outer Quick coupling: Storz aluminium	
132	83 19 33	Coupling part	1
		Discharge Connection DN 100 Thread: ISO G4A Outer Quick coupling: Storz diam=115 mm aluminium	
133	84 34 04	Hexagon head screw M16X45-A2-70	2
134	82 35 23	Plain washer 16-A2-A-170	2
800	782 41 00	O-ring kit	1
		NBR	
815	648 36 04	Starter	1
		350 3-phase 50 Hz 380V - 415 V Current range: 6,30 - 9 A Overload supervision Phase sequence indicator Supply connection CEE 5-PLUG 16A Cable gland diameter: 10 - 20 mm Not CSA approved	
815	648 36 14	Starter	1
		350 3-phase 50 Hz 380V - 415 V Current range: 6,30 - 9 A Overload supervision Phase sequence indicator Supply connection CEE 5-PLUG 32A Cable gland diameter: 10 - 20 mm Not CSA approved	

Pos. No	Part. No	Denomination	Qty/Version
			281
815	648 36 45	Starter	1
		350 3-phase 50 Hz 220V - 240 V Current range: 9 - 12,50 A Overload supervision Phase sequence indicator Supply connection on terminal Cable gland diameter: 10 - 20 mm Not CSA approved	
		350 3-phase 50 Hz 415V - 440 V Current range: 9 - 12,50 A Overload supervision Phase sequence indicator Supply connection on terminal Cable gland diameter: 10 - 20 mm Not CSA approved	
815	648 36 44	Starter	1
		350 3-phase 50 Hz 380V - 400 V Current range: 6,30 - 9 A Overload supervision Phase sequence indicator Supply connection on terminal Cable gland diameter: 10 - 20 mm Not CSA approved	
815	648 36 43	Starter	1
		350 3-phase 50 Hz 500V - 500 V Current range: 4 - 6,30 A Overload supervision Phase sequence indicator Supply connection on terminal Cable gland diameter: 10 - 20 mm Not CSA approved	
815	554 30 04	Starter	1
		351 3-phase 50 Hz 380V - 415 V Current range: 6 - 10 A Overload supervision Phase sequence indicator Supply connection CEE 5-PLUG 16A Cable gland diameter: 10 - 20 mm Not CSA approved	
815	554 30 14	Starter	1
		351 3-phase 50 Hz 380V - 415 V Current range: 6 - 10 A Overload supervision Phase sequence indicator Supply connection CEE 5-PLUG 32A Cable gland diameter: 11 - 21 mm Not CSA approved	
815	554 30 44	Starter	1
		351 3-phase 50 Hz 380V - 415 V Current range: 6 - 10 A Overload supervision Phase sequence indicator Supply connection on terminal Cable gland diameter: 11 - 21 mm Not CSA approved	
815	554 30 73	Starter	1
		351 3-phase 50 Hz 500V - 500 V Current range: 4 - 6,30 A Overload supervision Phase sequence indicator Supply connection CEE 4-PLUG 32A Cable gland diameter: 11 - 21 mm Not CSA approved	
815	554 30 53	Starter	1
		351 3-phase 50 Hz 440V - 500 V Current range: 4 - 6,30 A Overload supervision Phase sequence indicator Supply connection on terminal Cable gland diameter: 11 - 21 mm Not CSA approved	

Pos. No	Part. No	Denomination	Qty/Version
			281
815	554 30 65	Starter 351 3-phase 50 Hz 220V - 240 V Current range: 9 - 14 A Overload supervision Phase sequence indicator Supply connection on terminal Cable gland diameter: 11 - 21 mm Not CSA approved	1
815	554 20 07	Starter 356 3-phase 60 Hz 200V - 208 V Current range: 17 - 23 A Overload supervision Supply connection on terminal Cable gland diameter: 13 - 25 mm CSA approved	1
815	554 20 06	Starter 356 3-phase 60 Hz 220V - 240 V Current range: 13 - 18 A Overload supervision Supply connection on terminal Cable gland diameter: 13 - 25 mm CSA approved	1
815	554 20 04	Starter 356 3-phase 50/60 Hz 380V - 415 V Current range: 9 - 14 A Overload supervision Supply connection on terminal Cable gland diameter: 13 - 25 mm CSA approved 356 3-phase 60 Hz 440V - 480 V Current range: 6 - 10 A Overload supervision Supply connection on terminal Cable gland diameter: 9 - 18 mm CSA approved	1
815	554 20 03	Starter 356 3-phase 60 Hz 575V - 600 V Current range: 4 - 6 A Overload supervision Supply connection on terminal Cable gland diameter: 9 - 18 mm CSA approved	1
815	554 21 06	Starter 356 3-phase 60 Hz 200V - 208 V Current range: 13 - 18 A Overload supervision Supply connection on terminal Cable gland diameter: 13 - 25 mm CSA approved 356 3-phase 60 Hz 220V - 240 V Current range: 13 - 18 A Overload supervision Supply connection on terminal Cable gland diameter: 13 - 25 mm CSA approved	1
815	554 21 04	Starter 356 3-phase 50/60 Hz 380V - 415 V Current range: 9 - 14 A Overload supervision Supply connection on terminal Cable gland diameter: 13 - 25 mm CSA approved 356 3-phase 60 Hz 440V - 480 V Current range: 6 - 10 A Overload supervision Supply connection on terminal Cable gland diameter: 13 - 25 mm CSA approved	1
815	554 21 03	Starter 356 3-phase 60 Hz 575V - 600 V Current range: 4 - 6 A Overload supervision Supply connection on terminal Cable gland diameter: 13 - 25 mm CSA approved	1

Pos. No	Part. No	Denomination	Qty/Version
			281
815	554 25 04	Starter	1
		BCD 4 3-phase 50 Hz 380V - 415 V Current range: 5,50 - 8 A Overload supervision Phase sequence indicator Supply connection CEE 5-PLUG 16A Cable gland diameter: 13 - 18 mm Not CSA approved	
815	554 25 14	Starter	1
		BCD 4 3-phase 50 Hz 380V - 415 V Current range: 5,50 - 8 A Overload supervision Phase sequence indicator Supply connection CEE 5-PLUG 32A Cable gland diameter: 13 - 18 mm Not CSA approved	
815	554 25 44	Starter	1
		BCD 4 3-phase 50 Hz 380V - 415 V Current range: 5,50 - 8 A Overload supervision Phase sequence indicator Supply connection on terminal Cable gland diameter: 13 - 18 mm Not CSA approved	
816	736 64 04	Wear part kit 50HZ MT	1
		MT, 50HZ ,D-IMP. CURVE CODE:434	
816	736 64 05	Wear part kit 60HZ MT	1
		MT, 60HZ ,D-IMP. CURVE CODE: 436	
817	736 66 08	Hydraulic repair kit	1
		MT WEAR PROT.UPPER:PU WEAR PROT.LOWER:PU	
900	782 81 07	Basic repair kit	1
		NBR PLUGIN 20MM, ACTIVE WCCR/ WCCR;WCCR/A1203	



ООО «Бауманс Груп» - официальный партнер фирмы Flygt в России.

Тел: +7 495 121 49 50

Эл. почта: info@baumgroup.ru

Сайт: www.baumgroup.ru